

ILO COOP 100 Webinar III Cooperatives for Climate Action

Cooperatives as drivers of climate action and green jobs

Moustapha Kamal Gueye
Coordinator, Green Jobs Programme

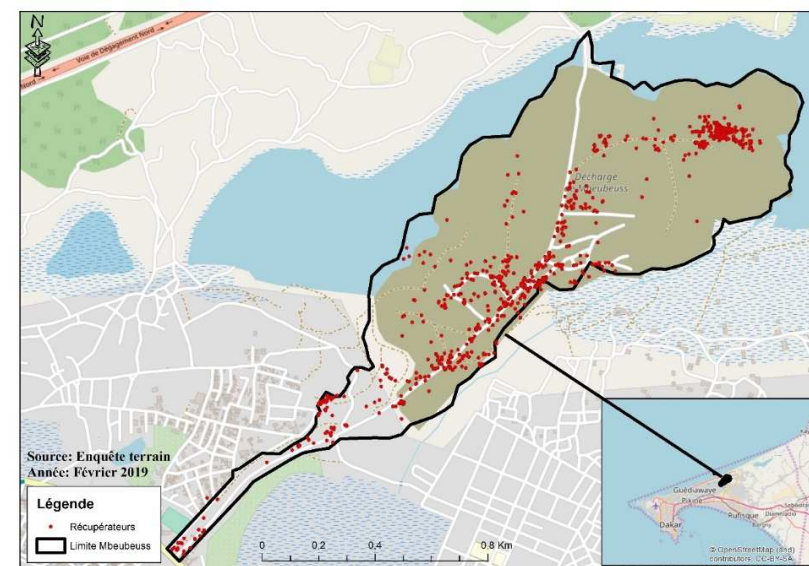
Date: Friday / 03 / July / 2020



Waste management and recycling at Mbeubeuss

- Mbeubeuss is an open waste dumping site established in 1968 and located at about 30 km north-east the city of Dakar.
- It covers an area of 175 ha (2018 estimates).
- 2,200 tonnes of garbage are dumped daily in the site. It is an important source of pollution and emission of greenhouse gas.
- A survey initiated by the ILO in collaboration with WIEGO found that 1584 waste collectors regularly operate at Mbeubeuss.
- This figure is not exhaustive given the seasonal variations in the number of waste collectors. Other studies suggest 4000 waste collectors.
- Of which 26% are women; 1 out of 4 waste collector is under 30 years; indicative prevalence of child labour.

La localisation des récupérateurs à Mbeubeuss



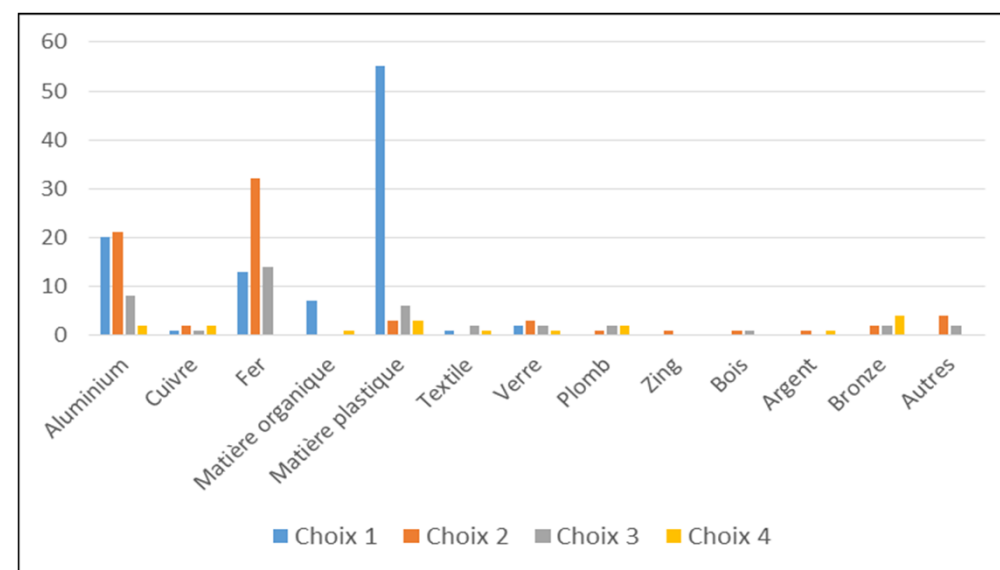
Lieu de vente, de stockage, de tri et de repos



Waste management and recycling at Mbeubeuss

- Waste pickers with a profession represent 46.5% of the sample (of 100). Past occupations are crafts (41.3%), commerce (21.74%), agriculture (11%), domestic employment (6.52%), transportation (4.3%) and other (15.2%).
- Waste collectors are organized in “informal supply chains” around the following waste streams: plastics, metal, glass, food waste.
- Collaborative project involving the ILO (COOP, Green Jobs, CO-DWT Dakar), WIEGO, and UCG to support a structuring of informal workers into cooperative(s).

Liste des matériaux selon le choix préférentiel de récupération



LaboGeHu, Recensement des récupérateurs, novembre 2018

Turning “typha” into thermal insulation material in Senegal

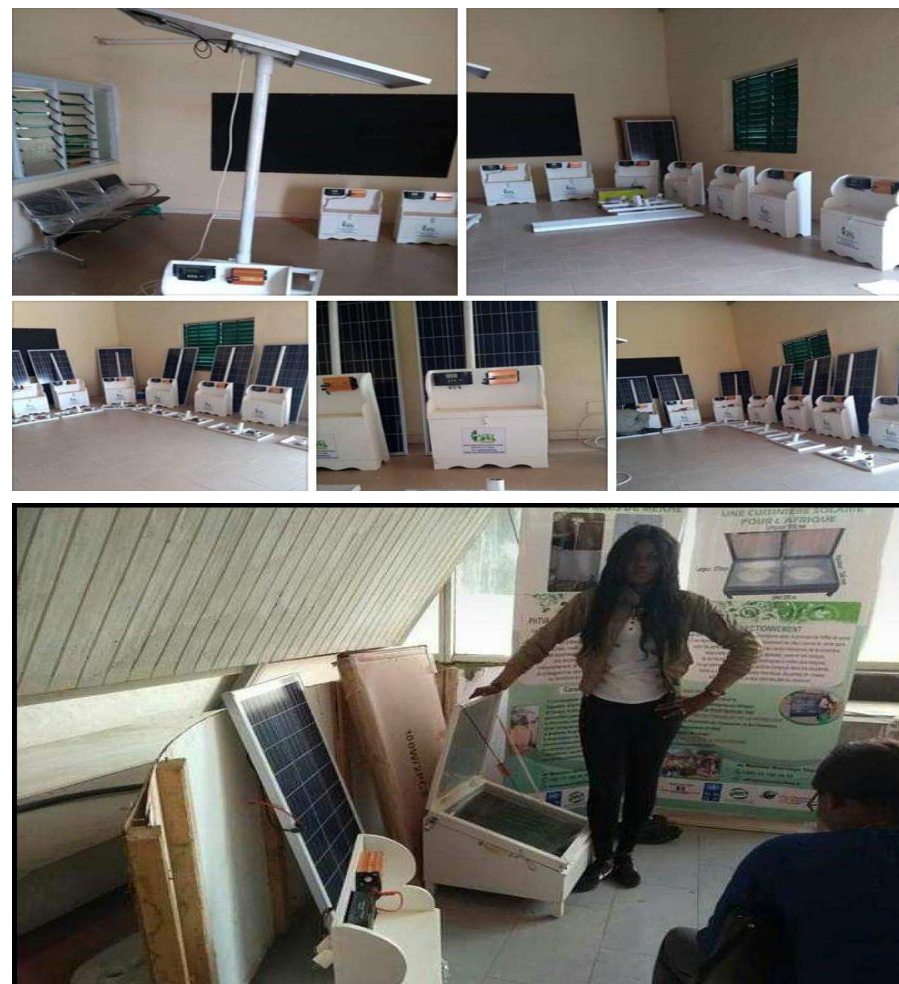
- 49% of carbon dioxide emissions are due to the building sector, therefore a significant potential for reduction of emissions.
- Typha (local designation) is water hyacinth (*Eichhornia crassipes*), an invasive species that developed rapidly around the Senegal river.
- The Typha project led by the Ministry of Environment and Sustainable Development (MEDD) aims to turn the invasive species into modern material for thermal insulation.
- In cooperation with MEDD, PAGE provided support in the capacity development of women cooperatives in the collection of typha as an input for the production of thermal isolation material.



Méckhé women for solar energy

- In 2017, partnership with the municipality of Méckhé as part of PACEV project.
- Support to the building of a center serving as premises for local production on solar equipment (workshop equipped with manual and electrical equipment with office space and spaces for training and a showroom).
- The management of this center is entrusted to the GIE PALETTE.
- The GIE works with a group known as “Emerging Women”.
- Trough PAGE, the ILO provided training and business management support.

LES EQUIPEMENTS SOLAIRES DE PALETTE/FEMMES EMERGENTES EXPOSES DANS L'ATELIER DE PRODUCTION DU CENTRE DE MECKHE APRES PROJET



Source: GIE PALETTE